

# Hemmingford - Covey Hill ( 75 km )

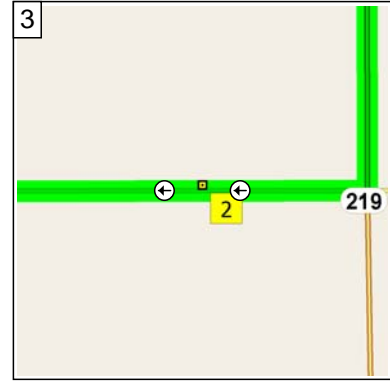
71.3 kilometers; 4 hours, 33 minutes



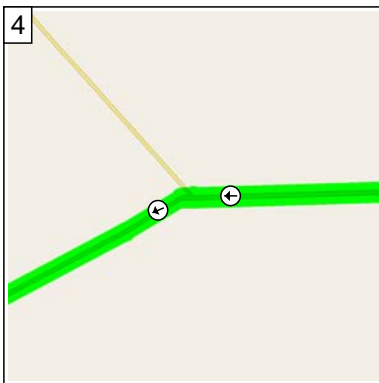
10:00 0.0 km  
Depart 533 Rue Frontière, Hemmingford Village QC on HWY-219 (South) for 3.7 km



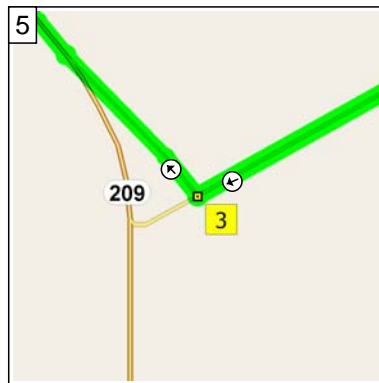
10:11 3.7 km  
Turn RIGHT (West) onto Local road(s) for 0.3 km



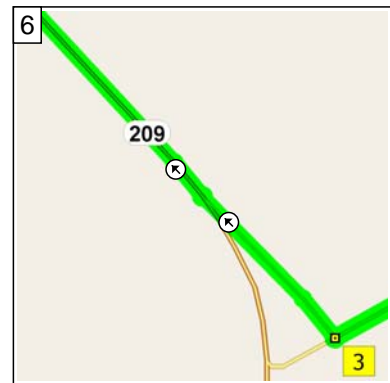
10:12 4.0 km  
At near Mooers Forks, stay on Local road(s) (West) for 22.8 km



11:28 26.8 km  
Bear LEFT (West) onto Local road(s) for 3.2 km



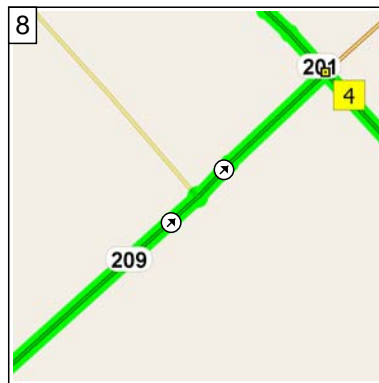
11:38 30.1 km  
At 4 Montée Doréa, Franklin QC, stay on Local road(s) (North-West) for 0.3 km



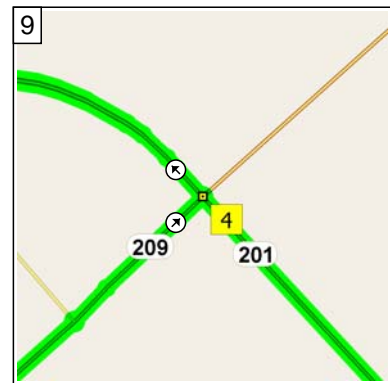
11:40 30.4 km  
Keep STRAIGHT onto HWY-209 for 7.5 km



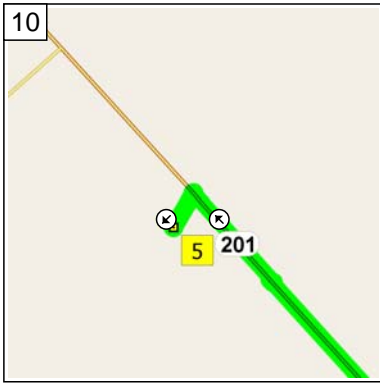
12:01 37.8 km  
Rest break (15 mins)



12:16 37.8 km  
Stay on HWY-209 (North-East) for 0.3 km



12:17 38.1 km  
At 2621 RTE-209, Franklin QC, turn LEFT (North-West) onto HWY-201 for 2.4 km



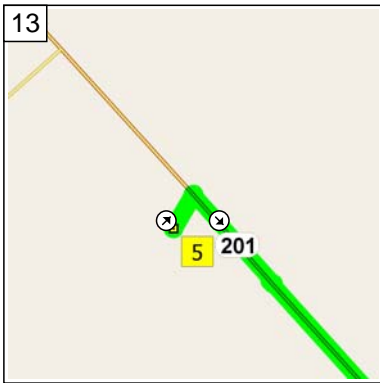
12:24 40.5 km  
Turn LEFT (South-West) onto Local road(s) for 70 m



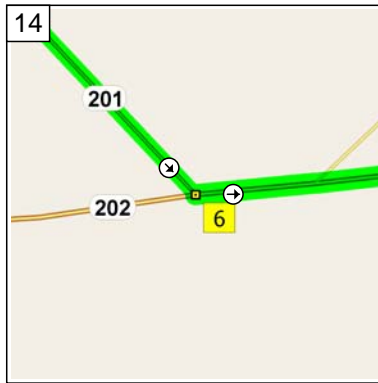
12:24 40.6 km  
Arrive Camping Lac Des Pins



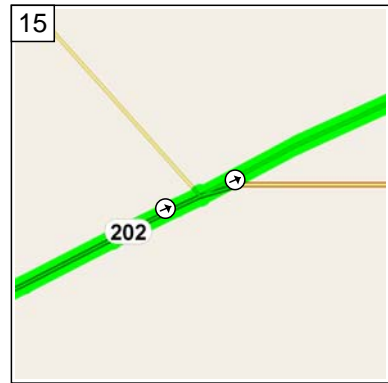
12:54 40.6 km  
Depart Camping Lac Des Pins on Local road(s) (North-East) for 70 m



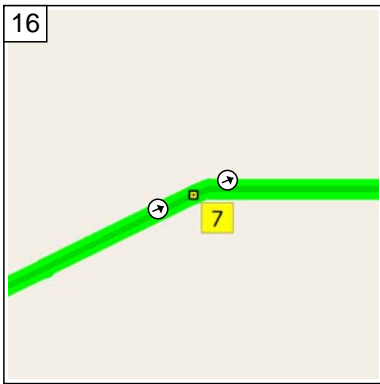
12:55 40.6 km  
Turn RIGHT (South-East) onto HWY-201 for 4.7 km



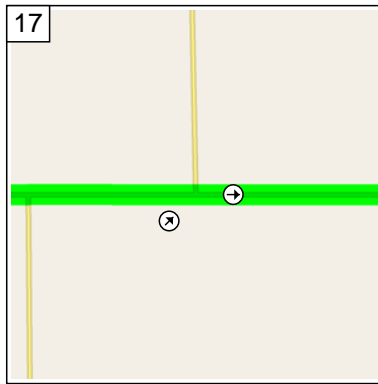
13:09 45.4 km  
At HWY-202, Franklin QC, bear LEFT (East) onto HWY-202 for 3.1 km



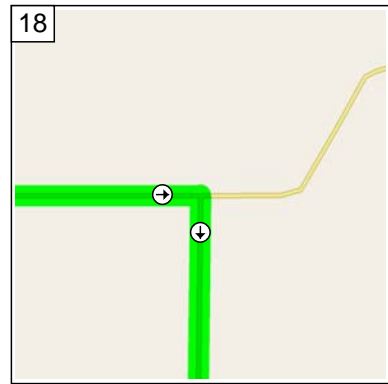
13:18 48.5 km  
Keep LEFT onto Local road(s) for 6.8 km



13:41 55.3 km  
At 598 Chemin Cowan, Havelock QC, stay on Local road(s) (East) for 5.2 km



13:58 60.5 km  
Bear RIGHT (East) onto Local road(s) for 4.7 km



14:14 65.2 km  
Turn RIGHT (South) onto Local road(s) for 3.9 km



14:27 69.1 km  
Turn RIGHT (South) onto  
HWY-219 for 2.2 km



14:33 71.3 km  
Arrive 533 Rue Frontière,  
Hemmingford Village QC